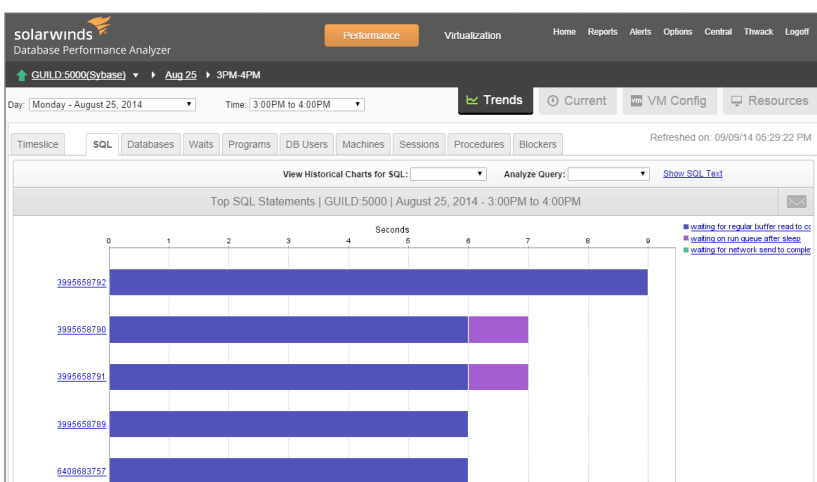


Database Performance Analyzer for SAP® ASE

SolarWinds® Database Performance Analyzer for SAP® ASE is a comprehensive database performance monitoring and analysis solution for DBAs, IT managers, and application developers. Database Performance Analyzer eliminates performance bottlenecks, improves application service, and reduces overall cost of SAP® ASE operations.

Focus On Response Time

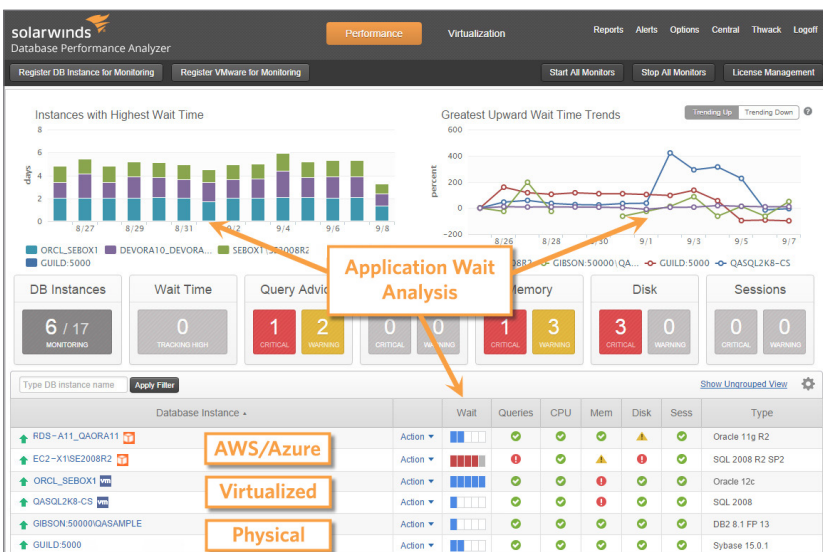
Database Performance Analyzer is different because it focuses on database response time, finding the root causes of delays inside of SAP® ASE. Database Performance Analyzer tracks every query in every active session, and captures the wait events that impose delays on the query.



Database Performance Analyzer helps you quickly pinpoint the issues that have the greatest impact on response time.

Supports SAP ASE Deployment Options

Monitor and optimize SAP ASE performance from a single view, whether that's on-premise, virtualized, or in the Cloud.



Download a free product trial and start monitoring your environment in minutes.

[DOWNLOAD FREE TRIAL](#)

Fully Functional for 14 Days

www.SolarWinds.com/DPA-Download

Key Advantages

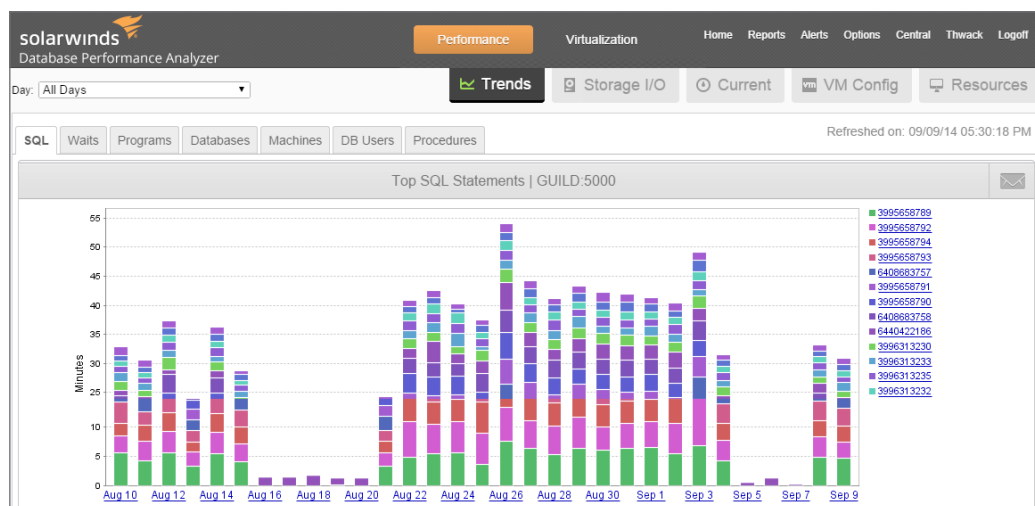
- **Four Clicks to Resolution.** Alarm trail leads DBAs directly to the root cause of the problem in 3-4 clicks.
- **Agentless.** Less than 1% load on monitored servers, even during heavy monitoring periods.
- **Multi-Dimensional Performance Analysis™.** Simplifies root cause analysis by correlating SQL statements, context, system and storage health, wait events, and response time.
- **Resource baselines, alerts and reports.** Proactively monitor system health, identifying trends before they become problems
- **Show the complete picture.** DPA correlates essential statistics to give an understanding of query bottlenecks, server health, and how session statistics interact—providing a complete performance picture.

Features

- Identify SQL blocks and corresponding locks and detailed analysis of cumulative impact(waits).
- View response time delays in real time, or history up to weeks and months.
- Automatically schedule graphical performance reports for delivery to any email address.
- Set proactive alerts to be notified of problems via email or SNMP trap.

Historical Trend Analysis

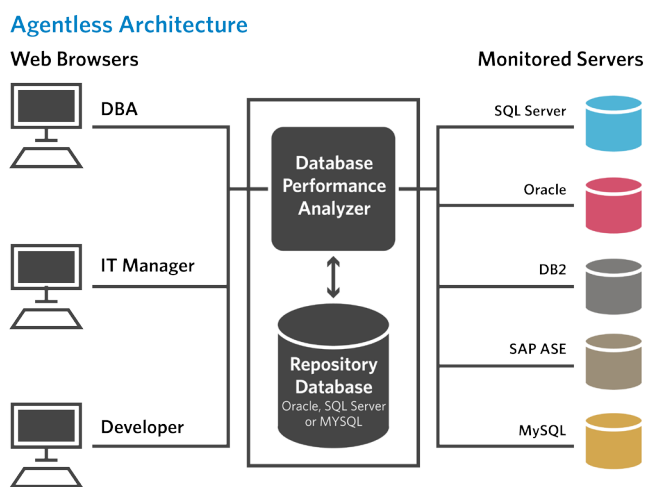
Database Performance Analyzer captures multiple dimensions of response time and server statistics in the data warehouse repository. While many tools focus only on the current situation, Database Performance Analyzer is unique because it analyzes repetitive clues that explain why the SAP® ASE database response is slow. The graphical display makes it easy for anyone – DBAs, managers, and developers – to see the trends and patterns that tell the complete performance story.



Historical analysis exposes the root cause of problems.

Agentless Architecture

Database Performance Analyzer installs no software or agent on the monitored server, placing less than 1% load on the monitored database instance. Database Performance Analyzer server software is installed on a separate system, which can be any UNIX®/Linux® or Windows® server, typically a test system under control of the DBA. Database Performance Analyzer data warehouse repository is configured on any Oracle®, SQL Server® or MySQL instance, either on the same or different server as Database Performance Analyzer software. In multi-vendor environments, SQL Server®, Oracle®, DB2, and MySQL® databases can also be monitored from the same Database Performance Analyzer server.



Database Performance Analyzer Agentless Architecture

Download a free product trial and start monitoring your environment in minutes.

DOWNLOAD FREE TRIAL

Fully Functional for 14 Days

www.SolarWinds.com/DPA-Download

Technical Specifications

- Monitor SAP® ASE 15.0.x, 15.5, 15.7, 16. Also monitor SQL Server®, Oracle®, DB2, and MySQL® from a single installation of Database Performance Analyzer.
- No client software required, supported browsers include IE, Chrome, and Firefox.
- Database Performance Analyzer runs on Windows and UNIX/Linux servers. Highly recommended that Database Performance Analyzer system be "always on", not a laptop that is removed from the network or turned off.
- Database Performance Analyzer repository: SQL Server 2008, 2012, 2014, 2016 or Oracle® 11g, 12c or MySQL 5.6, 5.7. Repository can be on the same or a different server than Database Performance Analyzer software